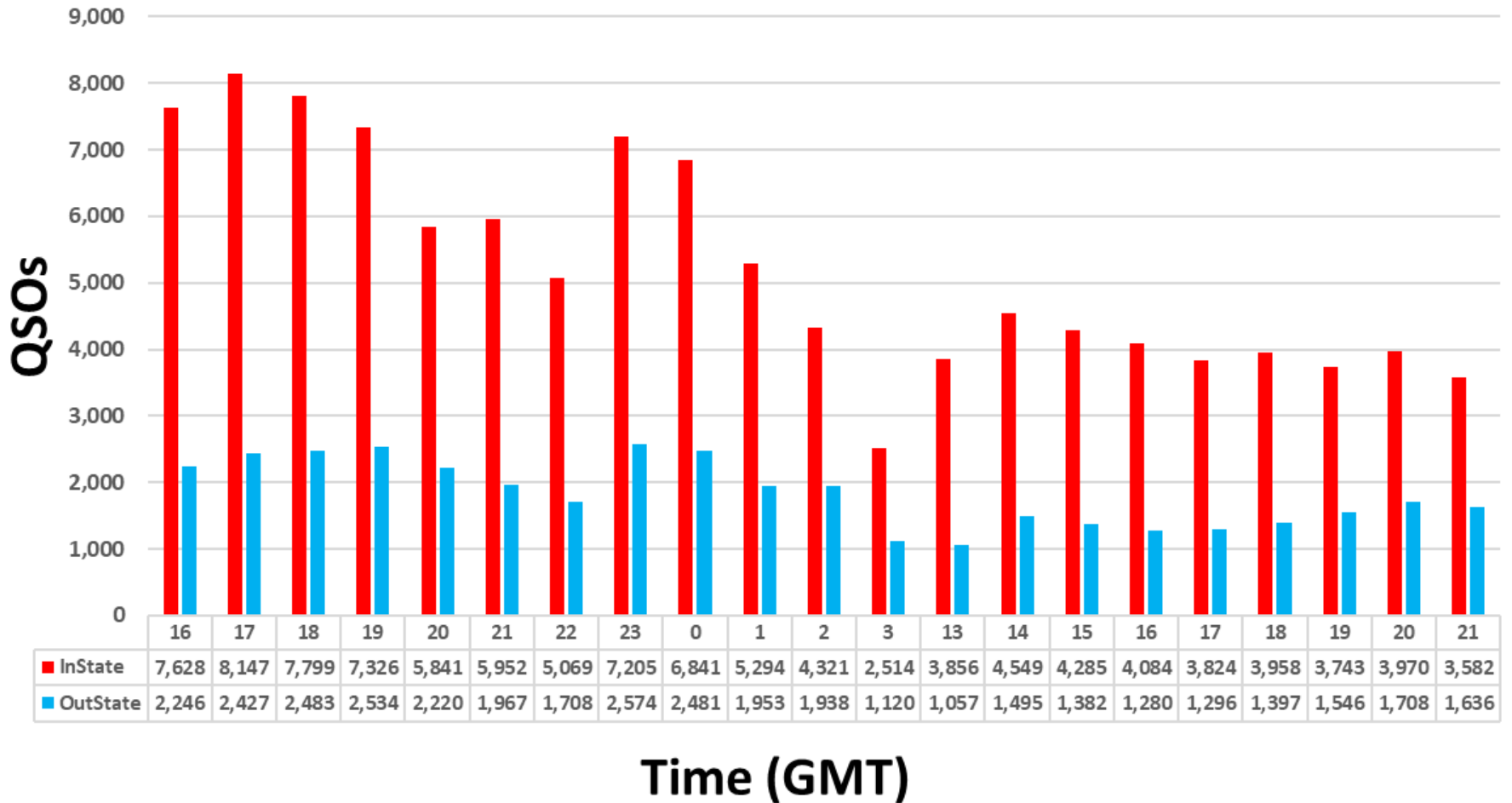


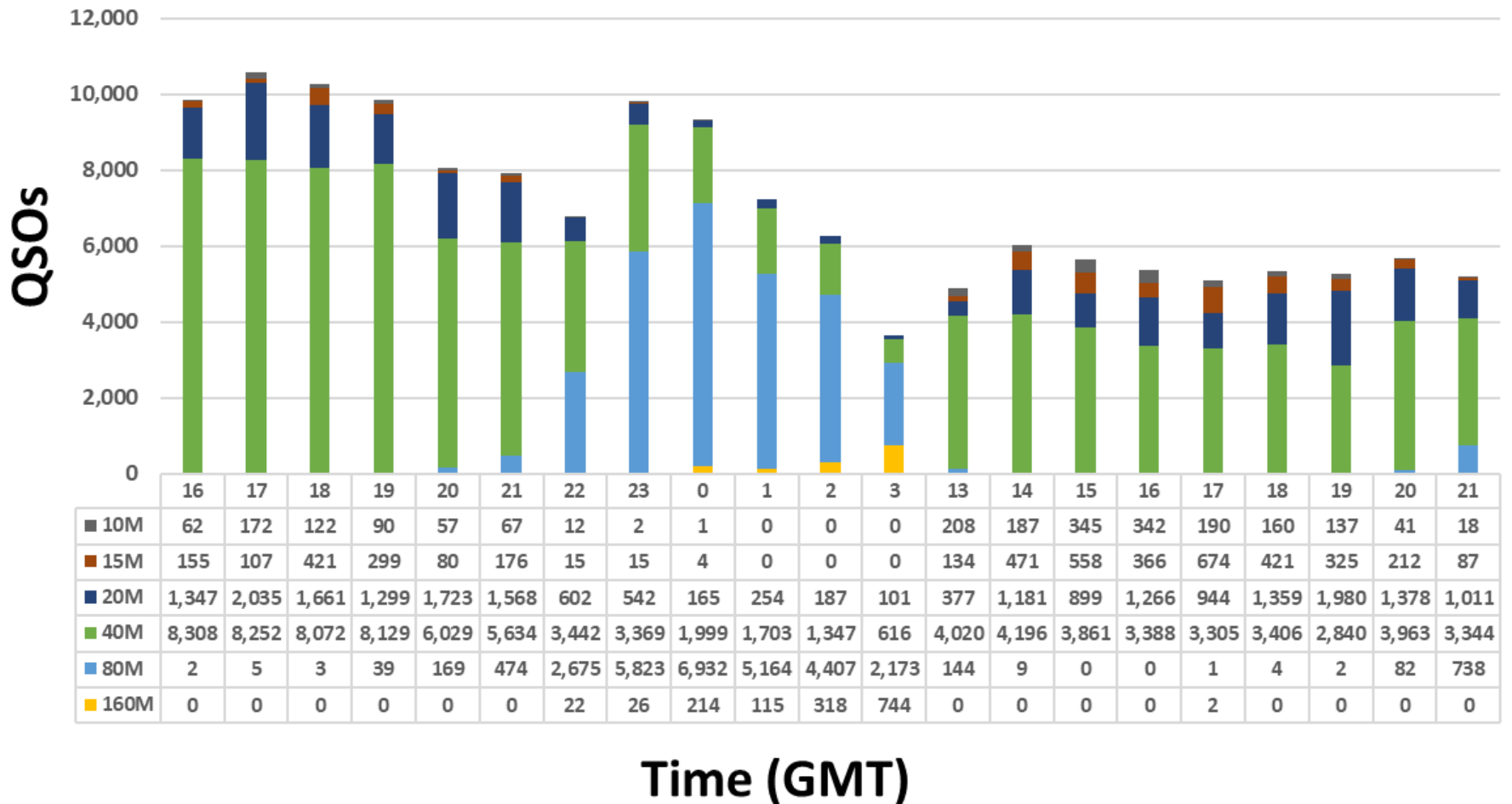
2023 PA QSO Party Metrics



2023 PA QSO Party – QSOs* by Hour



2023 PA QSO Party – QSOs* by Band



Most Active Band By Hour - PAQP 2023

GMT	16	17	18	19	20	21	22	23	00	01	02	03	13	14	15	16	17	18	19	20	21	
#1	40M	40M	40M	40M	40M	40M	40M	80M	80M	80M	80M	80M	40M	40M	40M	40M	40M	40M	40M	40M	40M	40M
#2	20M	20M	20M	20M	20M	20M	80M	40M	40M	40M	40M	160M	20M	20M	20M	20M	20M	20M	20M	20M	20M	20M

*Before Log Checking

2023 PA QSO Party – QSOs* by Band, Mode

Band	In State			Out of State			Combined		
	PH	CW	Total	PH	CW	Total	PH	CW	Total
160	169	899	1,068	17	356	373	186	1,255	1,441
80	12,979	8,670	21,649	2,881	4,320	7,201	15,860	12,990	28,850
40	49,222	18,926	68,148	11,618	9,490	21,108	60,840	28,416	89,256
20	6,742	7,392	14,134	2,604	5,145	7,749	9,346	12,537	21,883
15	976	1,980	2,956	261	1,303	1,564	1,237	3,283	4,520
10	1,086	677	1,763	165	288	453	1,251	965	2,216
6	15	8	23				15	8	23
144	74		74	1		1	75		75
222									
432									
Total	71,263	38,552	109,815	17,547	20,902	38,449	88,810	59,454	148,264

*Before Log Checking

2023 PA QSO Party – QSOs* by County

CTY	PH	CW	Total	CTY	PH	CW	Total	CTY	PH	CW	Total
ADA	1,272	60	1,332	ELK	1,013	783	1,796	MTR	756	14	770
ALL	1,895	1,426	3,321	ERI	958	993	1,951	NHA	1,522	173	1,695
ARM	720	252	972	FAY	673	172	845	NUM	1,502	614	2,116
BEA	837	173	1,010	FUL	404	18	422	PER	965	93	1,058
BED	542	44	586	FOR	224	133	357	PHI	978	1,238	2,216
BER	1,609	1,329	2,938	FRA	235	180	415	PIK	288	80	368
BLA	886	270	1,156	GRE	783	81	864	POT	699	531	1,230
BRA	575	6	581	HUN	422	783	1,205	SCH	877	22	899
BUX	1,781	1,175	2,956	INN	575	3	578	SNY	678	455	1,133
BUT	633	879	1,512	JEF	322	266	588	SOM	1,920	396	2,316
CMB	380	5	385	JUN	317	98	415	SUL	374	64	438
CRN	252	106	358	LAC	1,569	99	1,668	SUS	360	19	379
CAR	1,826	2,012	3,838	LAN	2,276	1,737	4,013	TIO	892	659	1,551
CEN	564	723	1,287	LAW	325	354	679	UNI	397	3	400
CHE	807	3,170	3,977	LEB	526	196	722	VEN	865	624	1,489
CLA	552	177	729	LEH	1,835	1,213	3,048	WAR	759	643	1,402
CLE	866	107	973	LUZ	1,545	771	2,316	WAS	1,909	244	2,153
CLI	244	3	247	LYC	1,390	1,461	2,851	WAY	897	26	923
COL	1,024	559	1,583	MCK	690	1,233	1,923	WES	2,345	1,207	3,552
CRA	210	280	490	MER	1,604	88	1,692	WYO	775	435	1,210
CUM	1,802	713	2,515	MIF	432	195	627	YOR	1,831	1,359	3,190
DAU	1,047	198	1,245	MOE	667	113	780				
DCO	1,512	962	2,474	MGY	2,232	2,325	4,557	Total	64,442	36,823	101,265

Rarest Counties	
1	CLI
2	FOR
3	CRN
4	PIK
5	SUS
6	CMB
7	UNI
8	JUN
9	FUL
10	SUL

*Before Log Checking

2023 PA QSO Party – QSOs* by Section /DX

SEC	PH	CW	Total	SEC	PH	CW	Total	SEC	PH	CW	Total
CT	546	210	756	LA	142	25	167	OH	1,317	905	2,222
EMA	509	510	1,019	MS	116	24	140	WV	715	534	1,249
ME	138	57	195	NM	52	3	55	IL	725	1,015	1,740
NH	231	114	345	NTX	292	455	747	IN	527	388	915
RI	53	40	93	OK	124	641	765	WI	332	300	632
VT	168		168	STX	200	384	584	CO	120	218	338
WMA	461	392	853	WTX	21	2	23	IA	87	165	252
ENY	675	459	1,134	EB	15	64	79	KS	255	198	453
NLI	613	384	997	LAX	15	10	25	MN	165	356	521
NNJ	1,166	1,143	2,309	ORG	53	117	170	MO	188	146	334
NNY	29	124	153	SB	8	4	12	NE	151	177	328
SNJ	603	479	1,082	SCV	32	23	55	ND	32	14	46
WNY	1,309	1,766	3,075	SDG	21	82	103	SD	198	27	225
DE	447	177	624	SF	54	47	101	AB	17		17
MDC	1,073	855	1,928	SJV	28	9	37	BC	11	1	12
AL	188	64	252	SV	23	50	73	GH	120	435	555
GA	440	456	896	PAC	8	6	14	MB	14	2	16
KY	324	467	791	AK	8	3	11	NB	73	228	301
NC	698	1,030	1,728	AZ	181	178	359	NL	1	1	2
NFL	404	377	781	EWA	27	6	33	NS	92	5	97
SC	689	552	1,241	ID	44	1	45	ONE	51	405	456
SFL	107	413	520	MT	22	6	28	ONN	21	1	22
TN	471	885	1,356	NV	95	57	152	ONS	682	271	953
VA	2,440	1,115	3,555	OR	53	111	164	PE	20		20
WCF	178	146	324	UT	38	7	45	QC	80	184	264
PR	15	6	21	WWA	127	188	315	SK	9	13	22
VI	2	7	9	WY	41	21	62	TER		2	2
AR	164	178	342	MI	850	700	1,550	DX	1,534	1,010	2,544
								All	22,834	21,621	46,999

Rarest Sections	
1	NL
2	TER
3	VI
4	AK
5	SB
6	BC
7	PAC
8	MB
9	AB
10	PE

*Before Log Checking