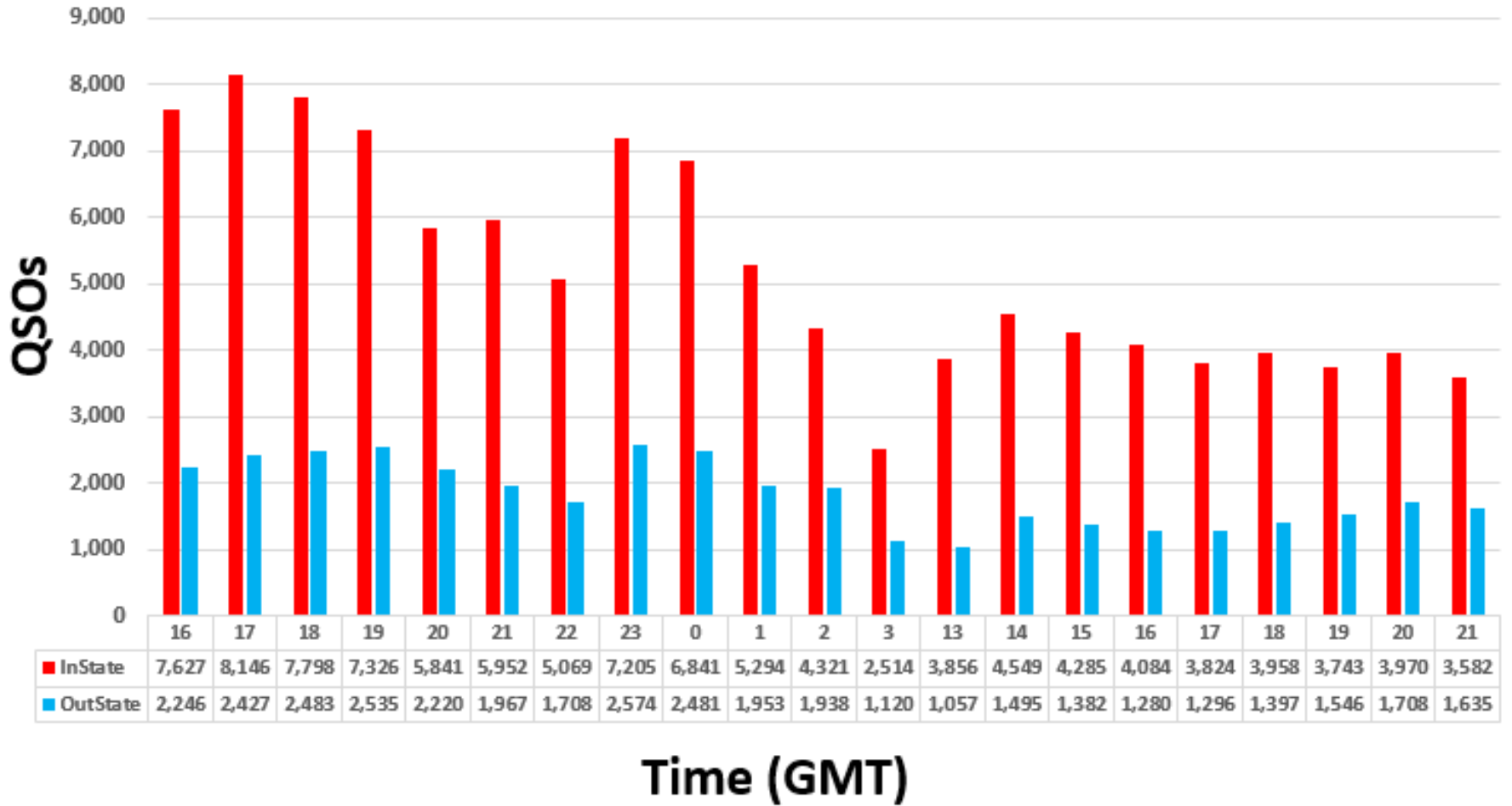


2023 PA QSO Party Metrics

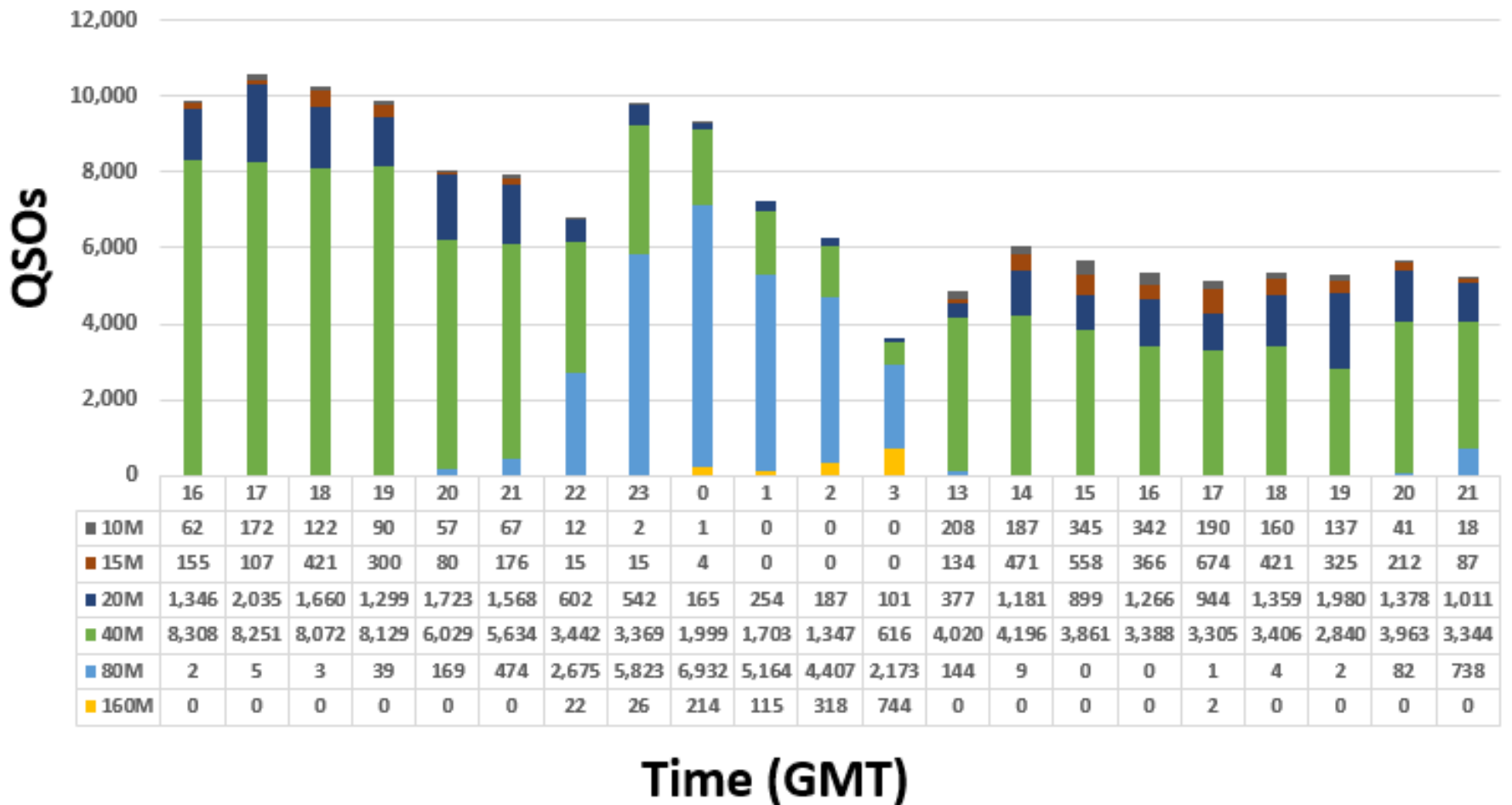


2023 PA QSO Party – QSOs* by Hour



*Before Log Checking

2023 PA QSO Party – QSOs* by Band



Most Active Band By Hour - PAQP 2023

GMT	16	17	18	19	20	21	22	23	00	01	02	03	13	14	15	16	17	18	19	20	21	
#1	40M	40M	40M	40M	40M	40M	40M	80M	80M	80M	80M	80M	40M	40M	40M	40M	40M	40M	40M	40M	40M	40M
#2	20M	20M	20M	20M	20M	20M	80M	40M	40M	40M	40M	160M	20M	20M	20M	20M	20M	20M	20M	20M	20M	20M

*Before Log Checking

2023 PA QSO Party – QSOs* by Band, Mode

Band	In State			Out of State			Combined		
	PH	CW	Total	PH	CW	Total	PH	CW	Total
160	169	899	1,068	17	356	373	186	1,255	1,441
80	12,976	8,670	21,646	2,881	4,319	7,200	15,857	12,989	28,846
40	49,214	18,913	68,127	11,617	9,490	21,107	60,831	28,403	89,234
20	6,740	7,391	14,131	2,604	5,145	7,749	9,344	12,536	21,880
15	976	1,980	2,956	262	1,303	1,565	1,238	3,283	4,521
10	1,083	677	1,760	165	288	453	1,248	965	2,213
6	15	8	23				15	8	23
144	74		74	1		1	75		75
222									
432									
Total	71,247	38,538	109,785	17,547	20,901	38,448	88,794	59,439	148,233

*Before Log Checking

2023 PA QSO Party – QSOs* by County

CTY	PH	CW	Total	CTY	PH	CW	Total	CTY	PH	CW	Total
ADA	1,272	60	1,332	ELK	1,013	782	1,795	MTR	756	14	770
ALL	1,896	1,426	3,322	ERI	956	993	1,949	NHA	1,522	173	1,695
ARM	720	251	971	FAY	673	172	845	NUM	1,502	614	2,116
BEA	837	173	1,010	FUL	404	18	422	PER	965	93	1,058
BED	542	44	586	FOR	224	133	357	PHI	978	1,237	2,215
BER	1,609	1,329	2,938	FRA	235	180	415	PIK	288	80	368
BLA	886	270	1,156	GRE	783	81	864	POT	699	531	1,230
BRA	575	6	581	HUN	422	783	1,205	SCH	876	22	898
BUX	1,781	1,175	2,956	INN	575	3	578	SNY	678	455	1,133
BUT	633	878	1,511	JEF	322	266	588	SOM	1,920	396	2,316
CMB	379	5	384	JUN	317	98	415	SUL	374	64	438
CRN	252	105	357	LAC	1,569	99	1,668	SUS	359	19	378
CAR	1,826	2,010	3,836	LAN	2,276	1,737	4,013	TIO	892	659	1,551
CEN	564	723	1,287	LAW	325	354	679	UNI	397	3	400
CHE	807	3,169	3,976	LEB	526	196	722	VEN	865	624	1,489
CLA	552	177	729	LEH	1,834	1,212	3,046	WAR	758	643	1,401
CLE	866	107	973	LUZ	1,545	770	2,315	WAS	1,908	244	2,152
CLI	244	3	247	LYC	1,390	1,459	2,849	WAY	895	26	921
COL	1,022	559	1,581	MCK	690	1,233	1,923	WES	2,344	1,207	3,551
CRA	210	280	490	MER	1,604	88	1,692	WYO	775	434	1,209
CUM	1,802	713	2,515	MIF	432	195	627	YOR	1,831	1,358	3,189
DAU	1,047	198	1,245	MOE	667	113	780				
DCO	1,512	962	2,474	MGY	2,231	2,324	4,555	Total	64,429	36,808	101,237

Rarest Counties	
1	CLI
2	CRN
3	FOR
4	PIK
5	SUS
6	CMB
7	UNI
8	JUN
9	FUL
10	SUL

*Before Log Checking

2023 PA QSO Party – QSOs* by Section /DX

SEC	PH	CW	Total	SEC	PH	CW	Total	SEC	PH	CW	Total
CT	546	210	756	LA	141	25	166	OH	1,317	905	2,222
EMA	509	510	1,019	MS	116	24	140	WV	715	534	1,249
ME	138	57	195	NM	52	3	55	IL	725	1,015	1,740
NH	231	114	345	NTX	292	455	747	IN	527	388	915
RI	53	40	93	OK	124	641	765	WI	332	300	632
VT	168		168	STX	200	384	584	CO	120	218	338
WMA	461	392	853	WTX	21	2	23	IA	87	165	252
ENY	675	459	1,134	EB	15	64	79	KS	255	198	453
NLI	613	384	997	LAX	15	10	25	MN	165	356	521
NNJ	1,165	1,143	2,308	ORG	53	117	170	MO	188	146	334
NNY	29	124	153	SB	8	4	12	NE	151	177	328
SNJ	603	479	1,082	SCV	32	23	55	ND	32	14	46
WNY	1,309	1,766	3,075	SDG	21	82	103	SD	198	27	225
DE	447	177	624	SF	54	47	101	AB	17		17
MDC	1,073	855	1,928	SJV	28	9	37	BC	11	1	12
AL	188	64	252	SV	23	50	73	GH	120	435	555
GA	440	456	896	PAC	8	6	14	MB	14	2	16
KY	324	467	791	AK	8	3	11	NB	73	228	301
NC	697	1,030	1,727	AZ	181	178	359	NL	1	1	2
NFL	404	377	781	EWA	27	6	33	NS	92	5	97
SC	689	552	1,241	ID	44	1	45	ONE	51	405	456
SFL	107	413	520	MT	22	6	28	ONN	21	1	22
TN	471	885	1,356	NV	95	57	152	ONS	682	271	953
VA	2,440	1,115	3,555	OR	53	111	164	PE	20		20
WCF	178	146	324	UT	38	7	45	QC	80	184	264
PR	15	6	21	WWA	127	188	315	SK	9	13	22
VI	2	7	9	WY	41	21	62	TER		2	2
AR	164	178	342	MI	850	700	1,550	DX	1,534	1,010	2,544
								All	22,831	21,621	46,996

Rarest Sections	
1	NL
2	TER
3	VI
4	AK
5	SB
6	BC
7	PAC
8	MB
9	AB
10	PE

*Before Log Checking