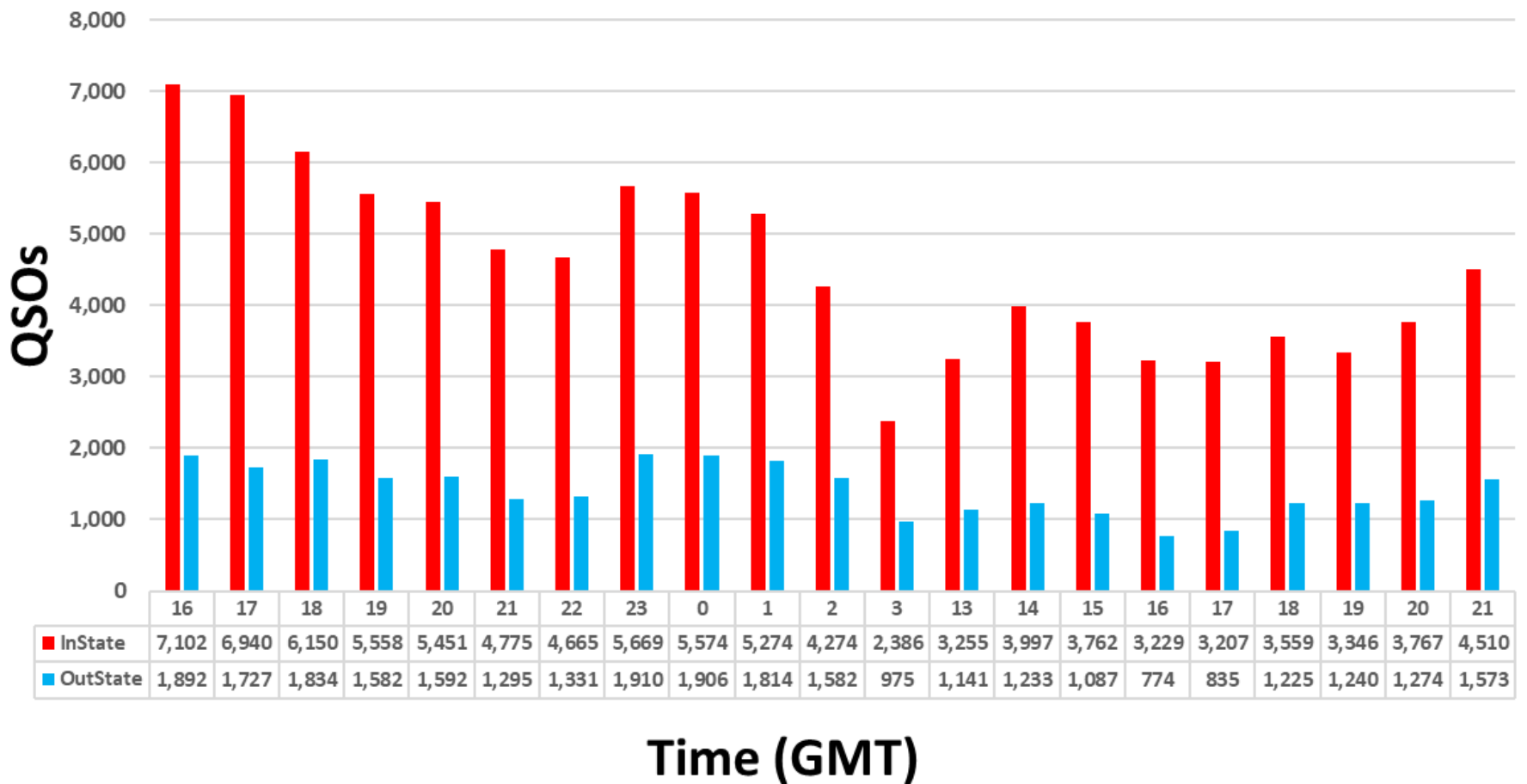


2022 PA QSO Party Metrics



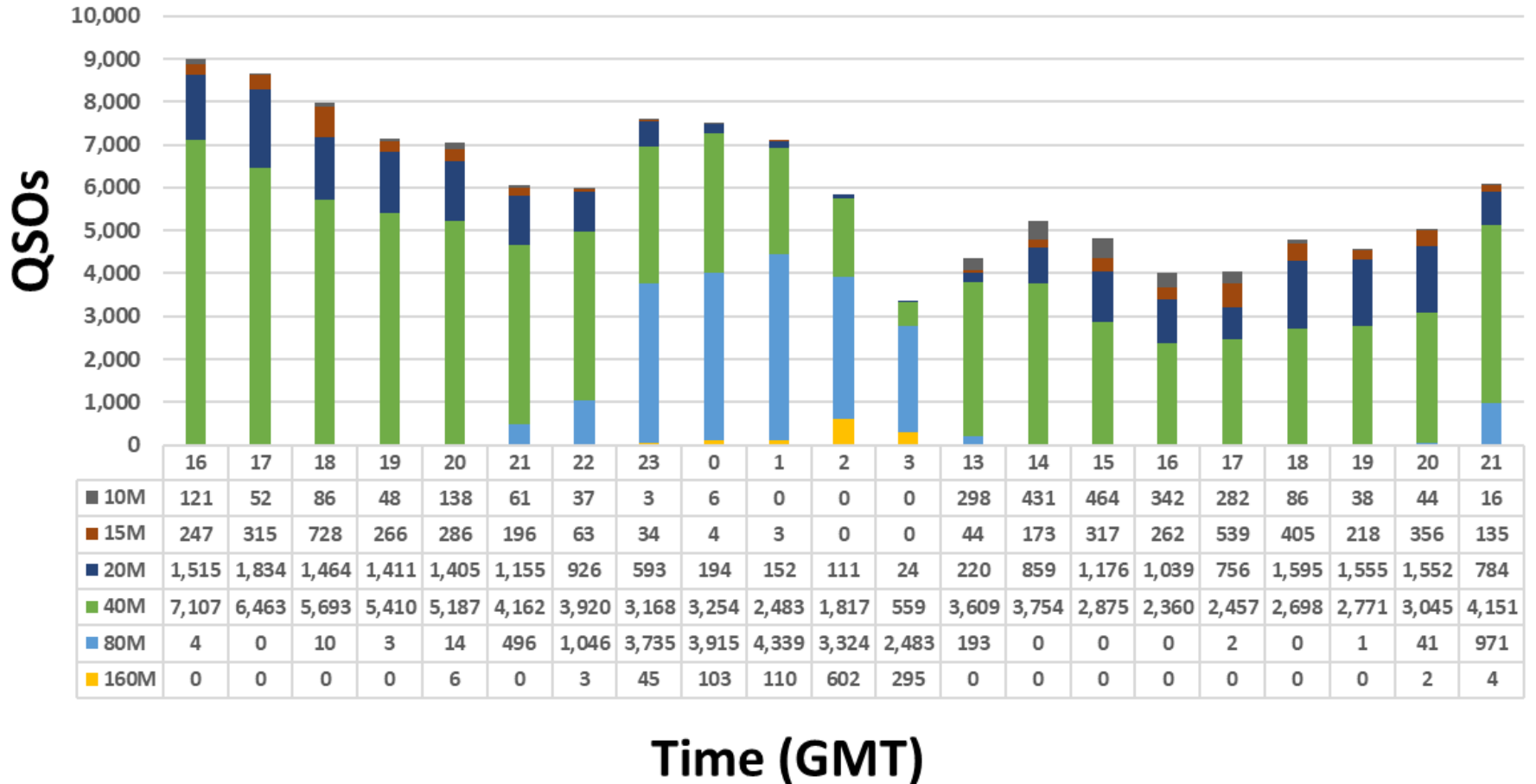
12/26/22

2022 PA QSO Party – QSOs* by Hour



*Before Log Checking

2022 PA QSO Party – QSOs* by Band



Most Active Band By Hour - PAQP 2022

GMT	16	17	18	19	20	21	22	23	00	01	02	03	13	14	15	16	17	18	19	20	21
#1	40M	40M	40M	40M	40M	40M	40M	80M	80M	80M	80M	80M	40M	40M	40M	40M	40M	40M	40M	40M	40M
#2	20M	20M	20M	20M	20M	20M	80M	40M	40M	40M	40M	40M	10M	20M	20M	20M	20M	20M	20M	20M	80M

*Before Log Checking

2022 PA QSO Party – QSOs* by Band, Mode

Band	In State			Out of State			Combined		
	PH	CW	Total	PH	CW	Total	PH	CW	Total
160	96	849	945	12	213	225	108	1,062	1,170
80	7,987	7,569	15,556	1,558	3,476	5,034	9,545	11,045	20,590
40	41,799	18,312	60,111	8,990	7,856	16,846	50,789	26,168	76,957
20	6,656	7,540	14,196	1,642	4,482	6,124	8,298	12,022	20,320
15	1,292	1,947	3,239	297	1,055	1,352	1,589	3,002	4,591
10	1,818	491	2,309	90	154	244	1,908	645	2,553
6	20	12	32				20	12	32
144	51		51				51		51
222									
432	14		14				14		14
Total	59,733	36,720	96,453	12,589	17,236	29,825	72,322	53,956	126,278

2022 PA QSO Party – QSOs* by County

CTY	PH	CW	Total	CTY	PH	CW	Total	CTY	PH	CW	Total
ADA	614	80	694	ELK	329	257	586	MTR	451		451
ALL	1,169	679	1,848	ERI	616	224	840	NHA	1,133	576	1,709
ARM	442	43	485	FAY	424	217	641	NUM	766	482	1,248
BEA	1,460	1,053	2,513	FUL	634	148	782	PER	569	66	635
BED	712	413	1,125	FOR	209	412	621	PHI	521	709	1,230
BER	922	1,153	2,075	FRA	726	468	1,194	PIK	285	73	358
BLA	810	78	888	GRE	497	93	590	POT	432	363	795
BRA	432	1	433	HUN	247	664	911	SCH	795	69	864
BUX	1,028	1,221	2,249	INN	388	40	428	SNY	534	512	1,046
BUT	788	1,056	1,844	JEF	339	158	497	SOM	663	396	1,059
CMB	402	116	518	JUN	190	249	439	SUL	178	65	243
CRN	194	51	245	LAC	783	68	851	SUS	516	3	519
CAR	1,700	2,119	3,819	LAN	1,803	1,409	3,212	TIO	742	552	1,294
CEN	270	915	1,185	LAW	283	385	668	UNI	465	39	504
CHE	584	1,945	2,529	LEB	662	268	930	VEN	356	101	457
CLA	697	264	961	LEH	1,473	876	2,349	WAR	250	84	334
CLE	485	73	558	LUZ	1,461	749	2,210	WAS	1,440	391	1,831
CLI	169	51	220	LYC	647	678	1,325	WAY	585	394	979
COL	312	469	781	MCK	771	586	1,357	WES	2,087	851	2,938
CRA	574	48	622	MER	589	335	924	WYO	784	443	1,227
CUM	1,214	537	1,751	MIF	560	326	886	YOR	1,110	262	1,372
DAU	691	168	859	MOE	358	383	741				
DCO	1,139	880	2,019	MGY	2,214	1,409	3,623	Total	47,673	30,246	77,919

Rarest Counties	
1	CLI
2	SUL
3	CRN
4	WAR
5	PIK
6	INN
7	BRA
8	MTR
9	VEN
10	ARM

2022 PA QSO Party – QSOs* by Section /DX

SEC	PH	CW	Total	SEC	PH	CW	Total	SEC	PH	CW	Total
CT	690	385	1,075	LA	193	45	238	OH	1,304	1,363	2,667
EMA	490	375	865	MS	82	6	88	WV	821	419	1,240
ME	115	173	288	NM	70	18	88	IL	619	1,061	1,680
NH	376	238	614	NTX	341	439	780	IN	770	361	1,131
RI	72	52	124	OK	165	461	626	WI	331	264	595
VT	170	27	197	STX	244	471	715	CO	237	178	415
WMA	373	683	1,056	WTX	49	9	58	IA	140	125	265
ENY	392	693	1,085	EB	37	105	142	KS	219	245	464
NLI	436	518	954	LAX	60	18	78	MN	444	659	1,103
NNJ	903	1,113	2,016	ORG	38	63	101	MO	264	223	487
NNY	75	144	219	SB	21	61	82	NE	144	127	271
SNJ	661	506	1,167	SCV	47	142	189	ND	36	4	40
WNY	813	1,124	1,937	SDG	27	46	73	SD	169	56	225
DE	434	359	793	SF	41	25	66	MAR	95		95
MDC	874	797	1,671	SJV	43	10	53	NL	4		4
AL	104	86	190	SV	77	51	128	QC	69	58	127
GA	561	615	1,176	PAC	13	22	35	PE	5		5
KY	333	490	823	AK	15	12	27	ONE	48	271	319
NC	760	834	1,594	AZ	329	189	518	ONN	119	2	121
NFL	383	610	993	EWA	39	2	41	ONS	789	221	1,010
SC	557	601	1,158	ID	76	8	84	SK	14		14
SFL	167	354	521	MT	17	49	66	AB	18	60	78
TN	553	1,038	1,591	NV	98	20	118	BC	12	1	13
VA	1,896	979	2,875	OR	99	219	318	MB	17	2	19
WCF	142	145	287	UT	66	18	84	NT	4		4
PR	11	2	13	WWA	169	340	509	GTA	77	126	203
VI	2	1	3	WY	64	9	73	DX	1,923	1,025	2,948
AR	282	279	561	MI	813	780	1,593	Total	24,650	23,710	48,360

Rarest Sections	
1	VI
2	NL
3	NT
4	PE
5	PR
6	BC
7	SK
8	MB
9	AK
10	PAC

*Before Log Checking