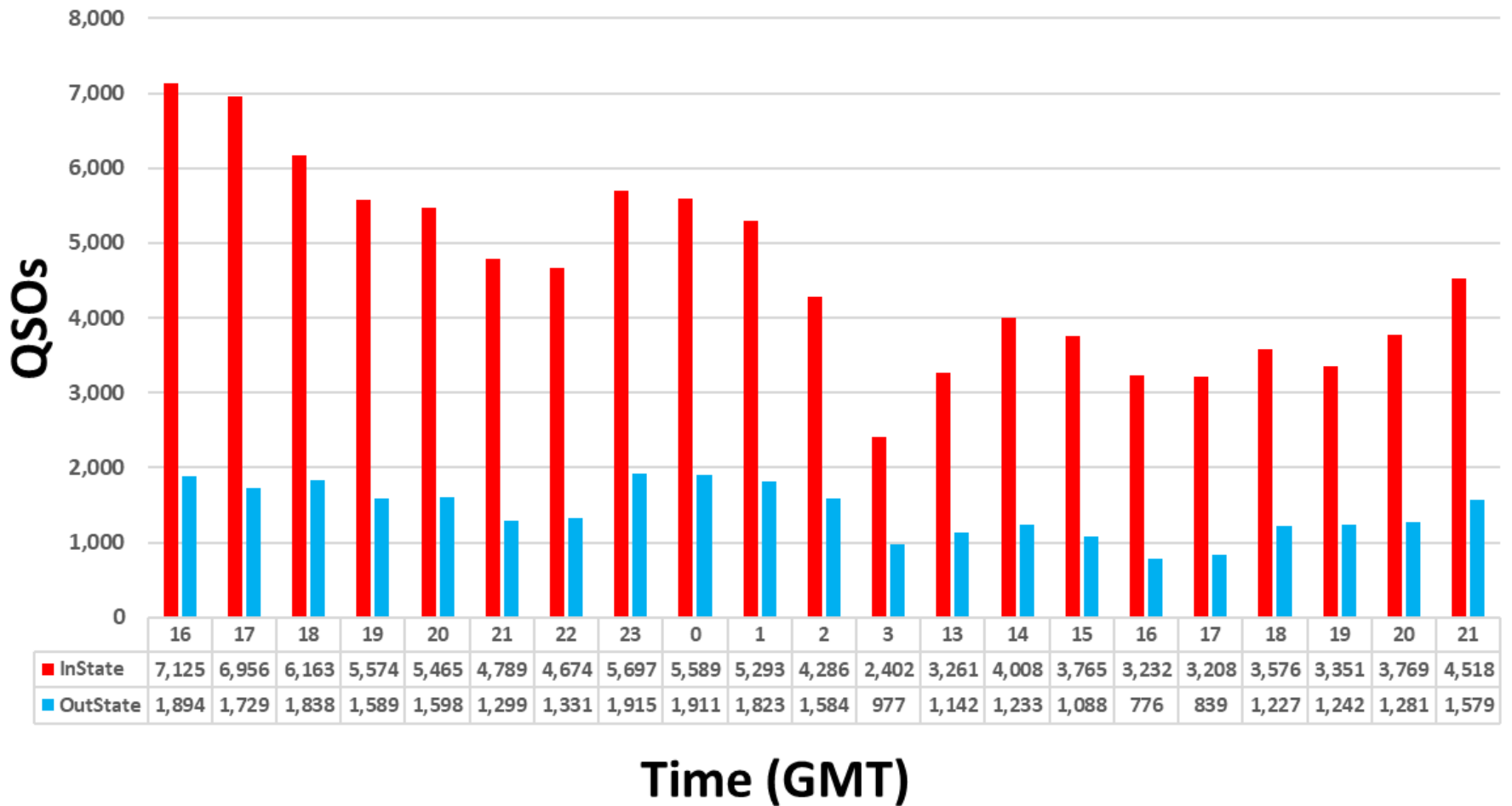


# 2022 PA QSO Party Metrics

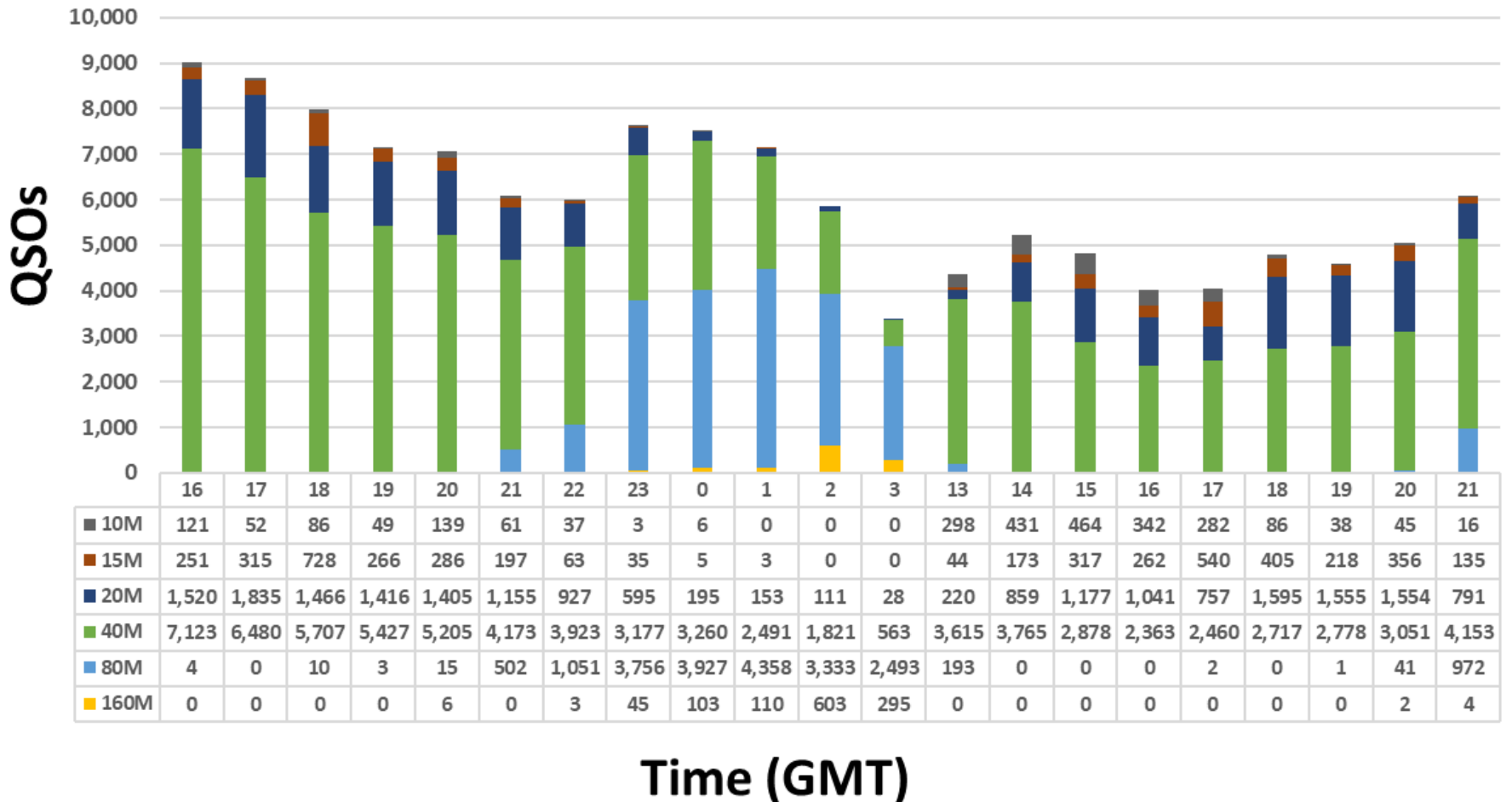


# 2022 PA QSO Party – QSOs\* by Hour



\*Before Log Checking

# 2022 PA QSO Party – QSOs\* by Band



## Most Active Band By Hour - PAQP 2022

GMT	16	17	18	19	20	21	22	23	00	01	02	03	13	14	15	16	17	18	19	20	21
#1	40M	40M	40M	40M	40M	40M	40M	80M	80M	80M	80M	80M	40M	40M	40M	40M	40M	40M	40M	40M	40M
#2	20M	20M	20M	20M	20M	20M	80M	40M	40M	40M	40M	40M	10M	20M	20M	20M	20M	20M	20M	20M	80M

\*Before Log Checking

# 2022 PA QSO Party – QSOs\* by Band, Mode

Band	In State			Out of State			Combined		
	PH	CW	Total	PH	CW	Total	PH	CW	Total
160	96	850	946	12	213	225	108	1,063	1,171
80	8,061	7,570	15,631	1,560	3,488	5,048	9,621	11,058	20,679
40	41,840	18,423	60,263	9,008	7,881	16,889	50,848	26,304	77,152
20	6,666	7,544	14,210	1,665	4,485	6,150	8,331	12,029	20,360
15	1,297	1,947	3,244	299	1,056	1,355	1,596	3,003	4,599
10	1,821	491	2,312	91	154	245	1,912	645	2,557
6	20	12	32				20	12	32
144	52		52				52		52
222									
432	14		14				14		14
Total	59,867	36,837	96,704	12,635	17,277	29,912	72,502	54,114	126,616

# 2022 PA QSO Party – QSOs\* by County

CTY	PH	CW	Total	CTY	PH	CW	Total	CTY	PH	CW	Total
ADA	614	81	695	ELK	329	258	587	MTR	451		451
ALL	1,171	681	1,852	ERI	616	225	841	NHA	1,133	577	1,710
ARM	442	43	485	FAY	424	218	642	NUM	766	483	1,249
BEA	1,464	1,057	2,521	FUL	639	149	788	PER	571	66	637
BED	713	415	1,128	FOR	209	414	623	PHI	521	710	1,231
BER	924	1,155	2,079	FRA	728	470	1,198	PIK	285	74	359
BLA	812	78	890	GRE	497	93	590	POT	433	364	797
BRA	432	1	433	HUN	247	665	912	SCH	796	69	865
BUX	1,031	1,223	2,254	INN	390	40	430	SNY	535	513	1,048
BUT	791	1,059	1,850	JEF	340	159	499	SOM	664	397	1,061
CMB	403	116	519	JUN	190	249	439	SUL	178	66	244
CRN	194	51	245	LAC	783	69	852	SUS	517	3	520
CAR	1,702	2,122	3,824	LAN	1,806	1,414	3,220	TIO	744	553	1,297
CEN	270	917	1,187	LAW	283	387	670	UNI	467	39	506
CHE	585	1,951	2,536	LEB	664	269	933	VEN	356	101	457
CLA	698	264	962	LEH	1,475	878	2,353	WAR	250	85	335
CLE	487	73	560	LUZ	1,464	752	2,216	WAS	1,441	392	1,833
CLI	169	52	221	LYC	648	680	1,328	WAY	586	394	980
COL	312	471	783	MCK	772	587	1,359	WES	2,091	854	2,945
CRA	576	48	624	MER	591	336	927	WYO	785	444	1,229
CUM	1,214	538	1,752	MIF	561	328	889	YOR	1,110	263	1,373
DAU	692	169	861	MOE	358	385	743				
DCO	1,142	883	2,025	MGY	2,216	1,411	3,627	Total	47,748	30,331	78,079

Rarest Counties	
1	CLI
2	SUL
3	CRN
4	WAR
5	PIK
6	INN
7	BRA
8	MTR
9	VEN
10	ARM

# 2022 PA QSO Party – QSOs\* by Section /DX

SEC	PH	CW	Total	SEC	PH	CW	Total	SEC	PH	CW	Total
CT	691	385	1,076	LA	193	45	238	OH	1,305	1,367	2,672
EMA	491	377	868	MS	82	6	88	WV	823	421	1,244
ME	115	174	289	NM	70	18	88	IL	620	1,061	1,681
NH	376	238	614	NTX	342	439	781	IN	770	362	1,132
RI	72	52	124	OK	165	462	627	WI	331	264	595
VT	170	27	197	STX	244	472	716	CO	237	178	415
WMA	373	685	1,058	WTX	49	9	58	IA	140	125	265
ENY	393	693	1,086	EB	37	105	142	KS	219	246	465
NLI	437	520	957	LAX	60	18	78	MN	444	660	1,104
NNJ	903	1,116	2,019	ORG	38	63	101	MO	264	223	487
NNY	75	145	220	SB	21	61	82	NE	144	127	271
SNJ	661	507	1,168	SCV	47	142	189	ND	37	4	41
WNY	814	1,129	1,943	SDG	27	46	73	SD	173	56	229
DE	434	361	795	SF	41	25	66	MAR	96		96
MDC	875	803	1,678	SJV	43	10	53	NL	4		4
AL	104	86	190	SV	77	51	128	QC	69	58	127
GA	562	616	1,178	PAC	13	22	35	PE	5		5
KY	333	490	823	AK	15	12	27	ONE	49	271	320
NC	760	834	1,594	AZ	337	191	528	ONN	119	2	121
NFL	384	610	994	EWA	39	2	41	ONS	790	221	1,011
SC	558	601	1,159	ID	76	8	84	SK	14		14
SFL	168	354	522	MT	17	49	66	AB	18	60	78
TN	553	1,040	1,593	NV	98	20	118	BC	12	1	13
VA	1,897	983	2,880	OR	99	219	318	MB	17	2	19
WCF	142	145	287	UT	67	18	85	NT	4		4
PR	11	2	13	WWA	169	340	509	GTA	77	126	203
VI	2	1	3	WY	64	9	73	DX	1,923	1,026	2,949
AR	282	279	561	MI	813	783	1,596	Total	24,683	23,759	48,442

Rarest Sections	
1	VI
2	NL
3	NT
4	PE
5	PR
6	BC
7	SK
8	MB
9	AK
10	PAC

\*Before Log Checking