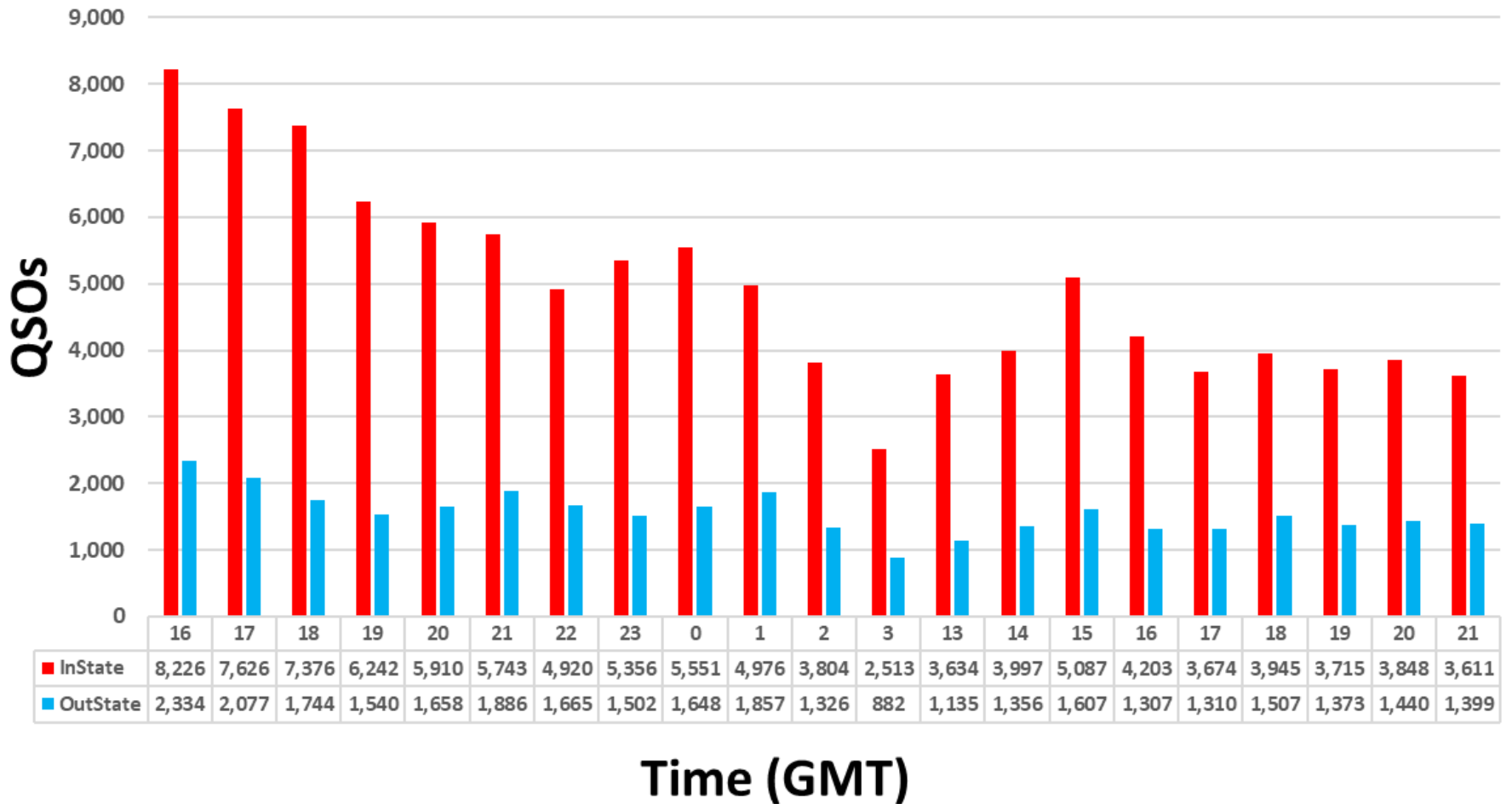


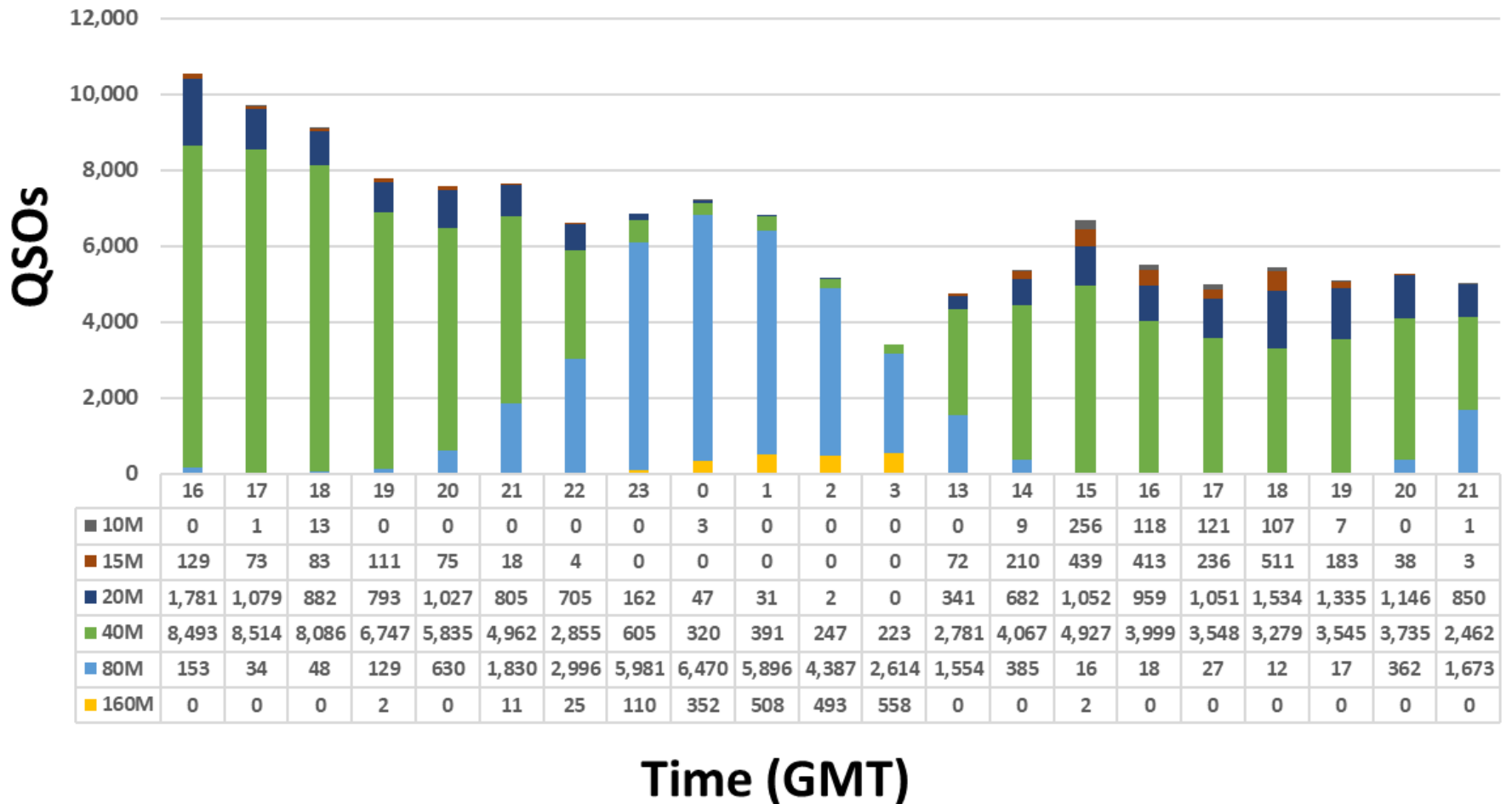
2021 Pa QSO Party QSO Metrics



2021 Pa QSO Party – QSOs* by Hour



2021 Pa QSO Party – QSOs* by Band



Most Active Band By Hour - PAQP 2021

GMT	16	17	18	19	20	21	22	23	00	01	02	03	13	14	15	16	17	18	19	20	21
#1	40M	40M	40M	40M	40M	40M	80M	80M	80M	80M	80M	80M	40M	40M	40M	40M	40M	40M	40M	40M	40M
#2	20M	20M	20M	20M	20M	80M	40M	40M	160M	160M	160M	160M	80M	20M	20M	20M	20M	20M	20M	20M	80M

*Before Log Checking

2021 Pa QSO Party – QSOs* by Band, Mode

Band	In State			Out of State			Combined		
	PH	CW	Total	PH	CW	Total	PH	CW	Total
160	286	1,282	1,568	53	440	493	339	1,722	2,061
80	15,945	11,309	27,254	3,326	4,664	7,990	19,271	15,973	35,244
40	42,831	18,300	61,131	10,802	7,695	18,497	53,633	25,995	79,628
20	5,262	6,414	11,676	1,306	3,285	4,591	6,568	9,699	16,267
15	655	1,100	1,755	196	647	843	851	1,747	2,598
10	285	209	494	73	69	142	358	278	636
6	31		31	1		1	32		32
144	53		53				53		53
222	2		2				2		2
432									
Total	65,350	38,614	103,964	15,757	16,800	32,557	81,107	55,414	136,521

*Before Log Checking

2021 Pa QSO Party – QSOs* by County

CTY	PH	CW	Total	CTY	PH	CW	Total	CTY	PH	CW	Total
ADA	552	300	852	ELK	239	291	530	MTR	353	7	360
ALL	2,138	1,163	3,301	ERI	836	743	1,579	NHA	1,613	386	1,999
ARM	456	150	606	FAY	696	337	1,033	NUM	264	207	471
BEA	1,747	771	2,518	FUL	521	132	653	PER	858	211	1,069
BED	336	141	477	FOR	158	148	306	PHI	580	824	1,404
BER	1,271	1,243	2,514	FRA	404	136	540	PIK	473	103	576
BLA	732	187	919	GRE	702	59	761	POT	1,012	795	1,807
BRA	456	8	464	HUN	486	967	1,453	SCH	885	330	1,215
BUX	1,392	1,067	2,459	INN	898	62	960	SNY	500	438	938
BUT	876	388	1,264	JEF	360	128	488	SOM	895	415	1,310
CMB	550	151	701	JUN	265	286	551	SUL	261	40	301
CRN	334	133	467	LAC	856	89	945	SUS	218	33	251
CAR	1,706	1,812	3,518	LAN	1,370	1,439	2,809	TIO	1,102	587	1,689
CEN	366	735	1,101	LAW	758	581	1,339	UNI	470	37	507
CHE	344	1,953	2,297	LEB	796	345	1,141	VEN	716	430	1,146
CLA	129	117	246	LEH	2,003	1,043	3,046	WAR	732	403	1,135
CLE	892	36	928	LUZ	1,188	659	1,847	WAS	1,781	377	2,158
CLI	357	119	476	LYC	534	580	1,114	WAY	564	43	607
COL	1,051	535	1,586	MCK	938	991	1,929	WES	1,739	1,124	2,863
CRA	327	273	600	MER	1,124	208	1,332	WYO	434	240	674
CUM	1,030	578	1,608	MIF	542	150	692	YOR	1,737	996	2,733
DAU	747	84	831	MOE	660	37	697				
DCO	1,499	659	2,158	MGY	2,229	1,832	4,061	Total	55,038	31,872	86,910

Rarest Counties	
1	CLA
2	SUS
3	SUL
4	FOR
5	MTR
6	BRA
7	CRN
8	CLI
9	BED
10	JEF

*Before Log Checking

2021 Pa QSO Party – QSOs* by Section /DX

SEC	PH	CW	Total	SEC	PH	CW	Total	SEC	PH	CW	Total
CT	977	293	1,270	LA	123	102	225	OH	1,716	1,304	3,020
EMA	327	710	1,037	MS	95	27	122	WV	931	691	1,622
ME	594	223	817	NM	56	13	69	IL	645	1,075	1,720
NH	252	427	679	NTX	340	739	1,079	IN	644	213	857
RI	87	111	198	OK	105	281	386	WI	234	100	334
VT	330	57	387	STX	194	353	547	CO	199	394	593
WMA	430	264	694	WTX	37	6	43	IA	141	59	200
ENY	713	648	1,361	EB	35	41	76	KS	227	202	429
NLI	586	538	1,124	LAX	103	86	189	MN	229	416	645
NNJ	1,167	1,134	2,301	ORG	167	196	363	MO	272	243	515
NNY	40	119	159	SB	16	59	75	NE	109	143	252
SNJ	907	349	1,256	SCV	17	48	65	ND	13	3	16
WNY	949	1,238	2,187	SDG	25	124	149	SD	70	26	96
DE	663	573	1,236	SF	49	27	76	MAR	48	7	55
MDC	1,072	579	1,651	SJV	41	78	119	NL	4	5	9
AL	144	124	268	SV	46	46	92	QC	79	70	149
GA	434	498	932	PAC	3	17	20	PE	3		3
KY	357	226	583	AK	9	11	20	ONE	117	108	225
NC	1,004	915	1,919	AZ	190	138	328	ONN	75	1	76
NFL	296	565	861	EWA	32	14	46	ONS	576	266	842
SC	437	164	601	ID	66	6	72	SK	3		3
SFL	96	307	403	MT	20	16	36	AB	16	10	26
TN	502	969	1,471	NV	108	52	160	BC	20	28	48
VA	2,342	1,080	3,422	OR	75	257	332	MB	31	15	46
WCF	175	314	489	UT	63	9	72	NT		2	2
PR	18	5	23	WWA	130	343	473	GTA	358	555	913
VI	2	1	3	WY	31	7	38	DX	922	1,116	2,038
AR	162	203	365	MI	1,148	760	1,908	Total	26,069	23,542	49,611

Rarest Sections	
1	NT
2	VI
3	PE
4	SK
5	NL
6	ND
7	PAC
8	AK
9	PR
10	AB

*Before Log Checking