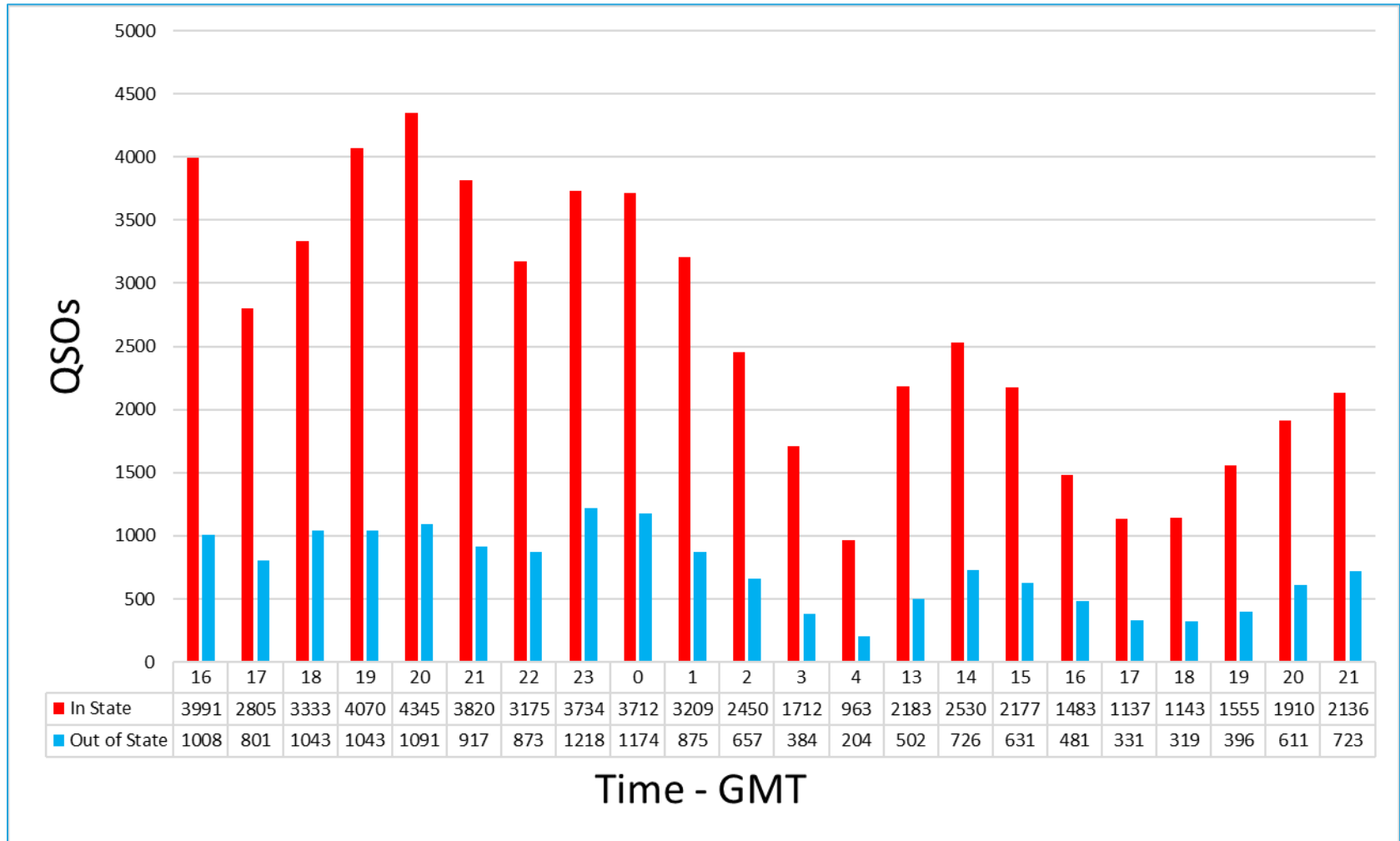


# 2018 Pa QSO Party QSO Metrics



# 2018 Pa QSO Party – QSOs by Hour



# 2018 Pa QSO Party – QSOs by Band, Mode

Band	In State				Out of State				Combined			
	PH	CW	DIG	Total	PH	CW	DIG	Total	PH	CW	DIG	Total
160	143	656		799	12	218		230	155	874		1,029
80	17,086	6,732		23,818	2,980	2,771		5,751	20,066	9,503		29,569
40	17,420	8,757	39	26,216	4,533	3,776	13	8,322	21,953	12,533	52	34,538
20	3,992	2,457	21	6,470	571	1,076	6	1,653	4,563	3,533	27	8,123
15	136	110		246	25	29		54	161	139		300
10	5	1		6		2		2	5	3		8
6	1			1					1			1
144	20			20					20			20
222	1			1					1			1
<b>Total</b>	<b>38,804</b>	<b>18,713</b>	<b>60</b>	<b>57,577</b>	<b>8,121</b>	<b>7,872</b>	<b>19</b>	<b>16,012</b>	<b>46,925</b>	<b>26,585</b>	<b>79</b>	<b>73,589</b>

# 2018 Pa QSO Party – County Count

CTY	PH	CW	DIG	Total	CTY	PH	CW	DIG	Total
ADA	317	176		493	LAC	786	60	10	849
ALL	2,551	1,792		4,343	LAN	2,708	1,065	2	3,775
ARM	798	31	1	830	LAW	857	215	5	1,077
BEA	2,115	616		2,731	LEB	1,247	524		1,771
BED	547	76		623	LEH	3,786	1,866	9	5,655
BER	3,577	1,580		5,157	LUZ	1,719	260		1,979
BLA	2,015	544		2,559	LYC	313	50		363
BRA	139			139	MCK	1,377	1,088	8	2,469
BUT	831	232		1,063	MER	1,196	167	5	1,368
BUX	1,321	1,168		2,489	MIF	498	606		1,104
CMB	419	455		874	MOE	155	90		245
CAR	1,287	1,262		2,549	MGY	3,098	1,095		4,193
CEN	927	1,284		2,211	MTR	524	84	2	609
CHE	856	1,706		2,562	NHA	1,163	131	1	1,295
CLA	325	143		468	NUM	360	251		611
CLE	540	41		581	PER	415	67		482
CLI	1,140	886		2,026	PHI	903	760	2	1,665
COL	1,381	680		2,061	PIK	337	147	7	486
CRA	1,143	183		1,326	POT	267	49		316
CRN	2	51		53	SCH	650	739		1,389
CUM	1,214	862	1	2,077	SNY	226	157	1	383
DAU	774	2		776	SOM	550	642		1,192
DCO	845	257		1,102	SUL	159	11		170
ELK	276	296		572	SUS	1,102	263	9	1,367
ERI	490	876		1,366	TIO	1,295	1,022		2,317
FAY	380	380		760	UNI	336	115	5	452
FOR	1,605	752		2,357	VEN	969	110	5	1,079
FRA	264	157		421	WAR	1,358	313		1,671
FUL	190	198		388	WAS	1,393	16		1,409
GRE	108	76	5	186	WAY	1,643	86	21	1,733
HUN	572	1,176		1,748	WES	1,825	982		2,807
INN	1,068	68		1,136	WYO	730	424		1,154
JEF	425	428		853	YOR	1,516	912		2,428
JUN	452	278		730					

# 2018 Pa QSO Party – Section / DX Count

Sec	PH	CW	DIG	Total	Sec	PH	CW	DIG	Total	Sec	PH	CW	DIG	Total
CT	558	496		1,054	LA	99	22		121	OH	2,216	1,412	1	3,629
EMA	676	543		1,219	MS	57	10		67	WV	964	165		1,129
ME	374	200		574	NM	24	67	1	92	IL	906	1,126	1	2,033
NH	641	578		1,219	NTX	243	179	1	423	IN	618	331		949
RI	26	112		138	OK	179	489		668	WI	228	221	1	450
VT	454	7		461	STX	212	335		547	CO	138	130	1	269
WMA	569	122	10	694	WTX	18	37		55	IA	94	101		195
ENY	386	288		674	EB	73	3		76	KS	356	497		853
NLI	719	285		1,004	LAX	80	12		92	MN	201	435	1	637
NNJ	892	544		1,436	ORG	127	134		261	MO	310	303	3	615
NNY	240	21		261	SB	59	12		71	NE	77	57		134
SNJ	1,171	782		1,953	SCV	86	58		144	ND	120	7		127
WNY	935	1,513	2	2,449	SDG	159	102		261	SD	164	61		225
DE	443	195		638	SF	42	8		50	MAR	29	5		34
MDC	1,181	415		1,596	SJV	58	61		119	NL	7	15		22
AL	105	74		179	SV	106	76		182	QC	160	93		253
GA	947	810		1,757	PAC	2	2		4	ONE	78	11		89
KY	298	217		515	AK	9	1		10	ONN	79	7		86
NC	1,043	518	1	1,562	AZ	265	107	3	375	ONS	107	38		145
NFL	141	383	1	525	EWA	27	3		30	SK	6			6
SC	406	254		660	ID	47	7	1	55	AB	10	4		14
SFL	176	85		261	MT	30	32		62	BC	13	37		50
TN	797	1,031	1	1,829	NV	166	24		190	MB	64	1		65
VA	1,938	1,203	1	3,142	OR	112	154		266	NT				
WCF	152	123	2	277	UT	49	37		86	GTA	589	478		1,067
PR	4	3		7	WWA	179	164		343	DX	797	892	7	1,695
VI	1			1	WY	48	3		51					
AR	257	110	19	377	MI	1,078	613	1	1,692					