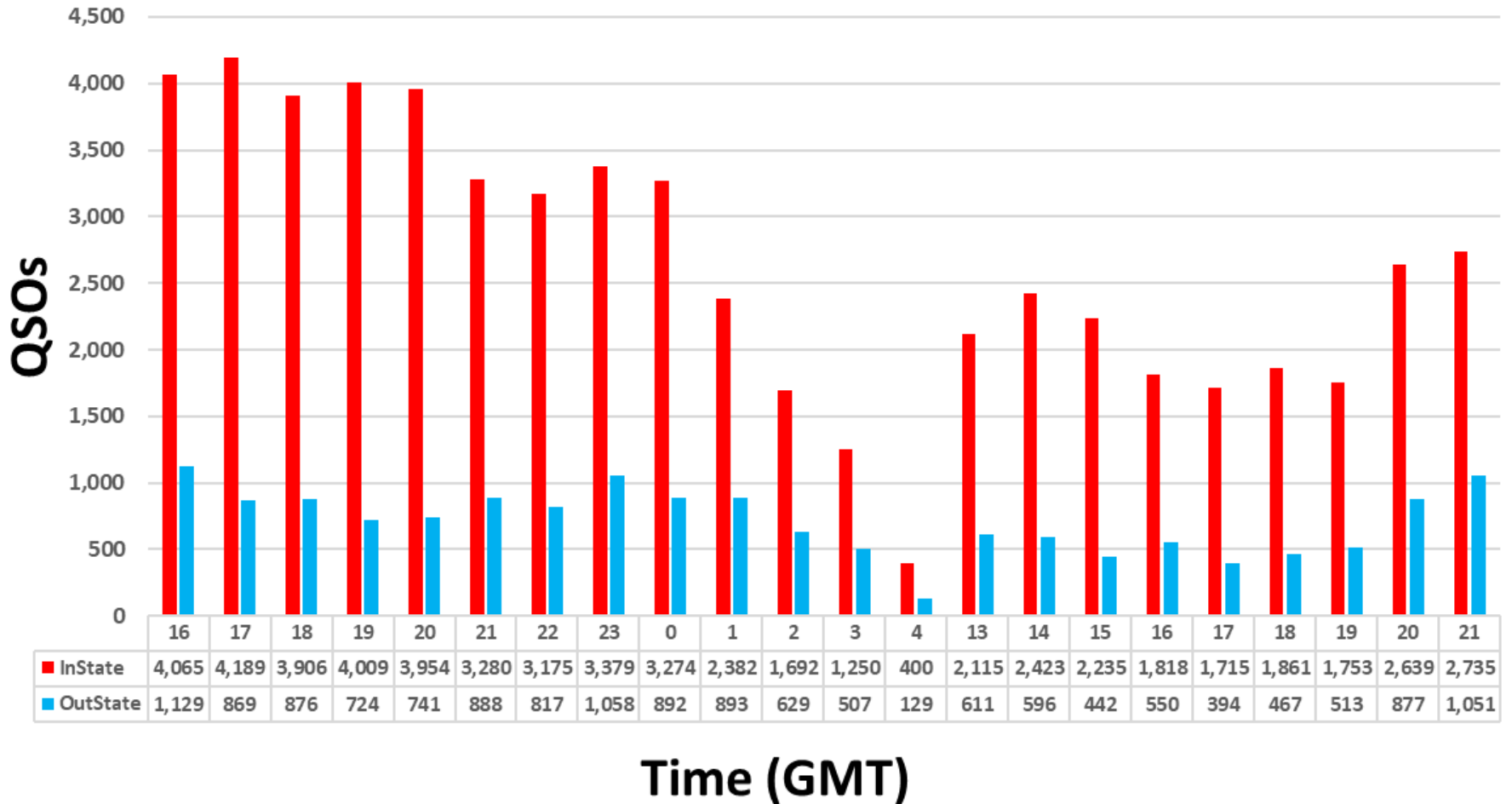


2019 Pa QSO Party QSO Metrics



2019 Pa QSO Party – QSOs by Hour



2019 Pa QSO Party – QSOs by Band, Mode

Band	In State			Out of State			Combined		
	PH	CW	Total	PH	CW	Total	PH	CW	Total
160	468	1,122	1,590	70	361	431	538	1,483	2,021
80	24,770	8,130	32,900	3,559	2,911	6,470	28,329	11,041	39,370
40	9,348	6,457	15,805	3,329	3,375	6,704	12,677	9,832	22,509
20	4,868	2,814	7,682	728	1,275	2,003	5,596	4,089	9,685
15	17	91	108	9	27	36	26	118	144
10	25	16	41	2		2	27	16	43
6	47	2	49	4		4	51	2	53
144	67		67	3		3	70		70
222	1		1				1		1
432	6		6				6		6
Total	39,617	18,632	58,249	7,704	7,949	15,653	47,321	26,581	73,902

2019 Pa QSO Party – County Count

CTY	PH	CW	Total	CTY	PH	CW	Total	CTY	PH	CW	Total
ADA	299	158	457	ELK	457	297	754	MTR	368	79	447
ALL	2,783	1,955	4,738	ERI	568	557	1,125	NHA	1,932	72	2,004
ARM	382	47	429	FAY	375	222	597	NUM	1,001	142	1,143
BEA	1,219	402	1,621	FUL	897	209	1,106	PER	599	105	704
BED	570	47	617	FOR	257	147	404	PHI	848	853	1,701
BER	3,444	1,499	4,943	FRA	788	583	1,371	PIK	1,303	20	1,323
BLA	1,147	111	1,258	GRE	408	129	537	POT	667	493	1,160
BRA	557	390	947	HUN	967	1,284	2,251	SCH	857	129	986
BUX	1,642	1,289	2,931	INN	686	39	725	SNY	636	700	1,336
BUT	991	571	1,562	JEF	483	190	673	SOM	2,294	986	3,280
CMB	317	77	394	JUN	387	153	540	SUL	727	830	1,557
CRN	279	164	443	LAC	686	1	687	SUS	1,265	1,222	2,487
CAR	2,359	2,423	4,782	LAN	1,035	2,092	3,127	TIO	1,393	896	2,289
CEN	378	422	800	LAW	786	587	1,373	UNI	446	53	499
CHE	776	611	1,387	LEB	824	388	1,212	VEN	819	161	980
CLA	650	156	806	LEH	2,703	1,102	3,805	WAR	213	117	330
CLE	1,515	90	1,605	LUZ	1,133	251	1,384	WAS	2,036	167	2,203
CLI	503	93	596	LYC	492	19	511	WAY	1,547	522	2,069
COL	1,481	419	1,900	MCK	1,022	864	1,886	WES	1,852	557	2,409
CRA	2,327	785	3,112	MER	1,031	623	1,654	WYO	249		249
CUM	1,268	686	1,954	MIF	423	176	599	YOR	2,431	1,695	4,126
DAU	566	9	575	MOE	445	209	654				
DCO	958	249	1,207	MGY	2,431	287	2,718				

Rarest	Counties
1	WYO
2	WAR
3	CMB
4	FOR
5	ARM
6	CRN
7	MTR
8	ADA
9	UNI
10	LYC

2019 Pa QSO Party – Section / DX Count

SEC	PH	CW	Total	SEC	PH	CW	Total	SEC	PH	CW	Total
CT	396	341	737	LA	134	9	143	OH	2,172	1,153	3,325
EMA	749	680	1,429	MS	145	131	276	WV	866	529	1,395
ME	306	39	345	NM	36	14	50	IL	1,152	1,339	2,491
NH	224	323	547	NTX	541	310	851	IN	579	277	856
RI	71	77	148	OK	140	377	517	WI	411	357	768
VT	212	32	244	STX	426	507	933	CO	195	157	352
WMA	328	145	473	WTX	29	6	35	IA	136	65	201
ENY	507	270	777	EB	75	1	76	KS	203	172	375
NLI	239	287	526	LAX	65	32	97	MN	359	568	927
NNJ	212	388	600	ORG	92	190	282	MO	323	160	483
NNY	14	3	17	SB	58	14	72	NE	128	57	185
SNJ	841	346	1,187	SCV	76	96	172	ND	121	11	132
WNY	598	929	1,527	SDG	108	53	161	SD	137	116	253
DE	209	541	750	SF	99	29	128	MAR	92	5	97
MDC	539	334	873	SJV	77	112	189	NL	51	16	67
AL	149	72	221	SV	114	86	200	QC	172	199	371
GA	1,134	805	1,939	PAC	2	17	19	ONE	97	209	306
KY	497	401	898	AK	26	12	38	ONN	52	2	54
NC	1,669	693	2,362	AZ	394	165	559	ONS	67	113	180
NFL	416	500	916	EWA	39	7	46	SK	6	3	9
SC	666	365	1,031	ID	46	8	54	AB	4	3	7
SFL	183	83	266	MT	21	6	27	BC	56	9	65
TN	1,172	1,363	2,535	NV	151	24	175	MB	119	1	120
VA	1,001	697	1,698	OR	174	210	384	NT	4		4
WCF	206	138	344	UT	45	65	110	GTA	206	252	458
PR	5	4	9	WWA	208	429	637	DX	543	660	1,203
VI				WY	90	2	92				
AR	324	247	571	MI	935	853	1,788				

Rarest	Sections
1	VI
2	NT
3	AB
4	PR
5	SK
6	NNY
7	PAC
8	MT
9	WTX
10	AK